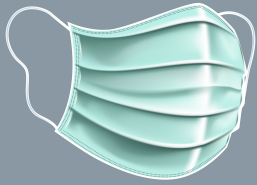




CAPISTRANO UNIFIED SCHOOL DISTRICT MASK GUIDELINES



DEFINITION OF A CLOTH FACE COVERING

A cloth face covering is a material that covers the nose and mouth. It can be secured to the head with ties or straps or simply wrapped around the lower face. It can be made of a variety of materials, such as cotton, silk, or linen. A cloth face covering may be factory-made or sewn by hand or can be improvised from household items such as scarfs, T-shirts, sweatshirts, or towels.

APPROVED CLOTH FACE COVERINGS	WHEN CLOTH FACE COVERINGS SHOULD BE REPLACED	NON-APPROVED FACE COVERINGS
Cloth covering secured to head with ties or straps	Do not fully cover the nose, mouth and chin	Face coverings which are not cloth and do not fully cover the nose, mouth and chin
Gaiter (double layer)	Have stretched out or damaged ties or straps	Bandanas
	Cannot stay on the face	Lace face coverings
	Have hole or tears in the fabric	Mesh face coverings
	Are wet	Crocheted face coverings
		Face coverings with exhaust valve
		N95 masks (For medical use only)
		Masks with food flaps
		Snorkels



EVERY STUDENT
EVERY DAY...
IN A NEW WAY

HOW TO WEAR A FACE MASK



Clean your hands with water and soap or hand sanitizer



Hold the mask by the ear loops and place a loop around each ear



Mold or pinch the stiff edge to the shape of your nose



Pull the bottom of the mask over your mouth and chin



Avoid touching the front of your mask when wearing